



GALATI
ГАЛАТИ

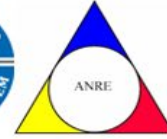
*

ROMANIA
ROMANIA

*

EUROPE
ЕВРОПЕ

A Reliable Partner for Turnkey industrial projects



Since 1994, a Leading Piping Company

Corporate business
Romanian Brand for
Industrial installations
Organised for carry out turnkey projects
Mechanical Erection
Engineering - Procurement - Construction
Civil



1994

Turnover 0,25 mill.€
9 Employees

2004

Turnover 1,5 mill.€
106 Employees

2014

Turnover 11 mil.€
359 Employees

2024

Turnover 30,5 mill.€
575 Employees

2025

Turnover 47,7 mill.€
626 Employees

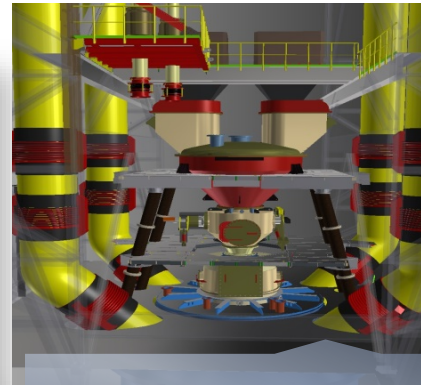
Competences



Erection & Repair Industrial
Installation Department



Fabrication steel structures



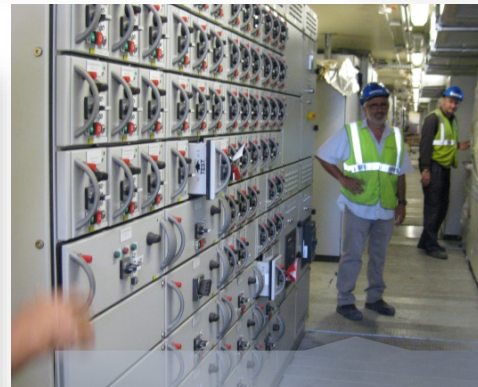
Engineering Department



Civil Department



Dynamic Equipment Installing
& Maintenance Department



Electrical & Automation
Department

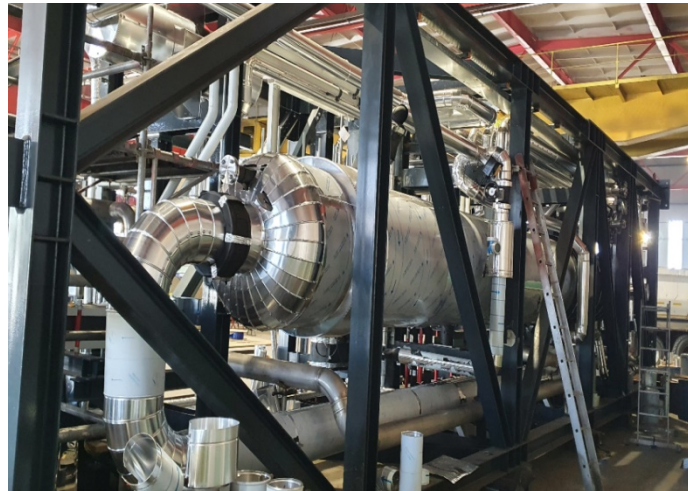


Criogenics Service Department

As special metallic constructions, for instance projects type SKID, are represented by portable or fixed platform on which pipe's grid are integrated in to technological flow.

Representative projects: Linde Gaz Romania /May 2013 - Supply and automation of burning system type LTOF, at location of Metalsil Prod Brasov. Technical characteristics: work fluid - oxygen, temperature: 20⁰/+50⁰C, pressure: 10 bar, material used: stainless steel A304.

Complex steel structures



Complex steel structures - Skids,
project Wloclawek Poland
Client: Linde Engineering AG
Period: June 2021 - Apr. 2022

Steel cover REKTI & HEX Box,
project Kedainiai Lithuania
Client: Linde AG
Period: Mar - Sept 2019



Various steel structures

Client: FLSmidth Norway

Period: Jan – July 2022

Location : CCS Norcem Brevik Plant,
 Norway

Scope: Fabrication fan stators parts;
 ducts & supports, flanges, expansion
 joints



Revamping of Filter bags

Client: FLSmidth Denmark

Period: 2018

Location: VAC Heidelberg Cement
 Factory, Hungary. Scope: Revamping
 of electrostatic precipitator

Filters & Piping



Prefabrication stainless steel pipelines

Client: Linde AG

Period: Aug - Nov.2019

Scope: prefabrication stainless steel pipelines for Sabine Pass.



Recirculation gas duct

Client: Primetals Technologies GmbH Austria

Period: Jan - May 2019

Scope: Manufacturing recirculation gas duct, weight 228.514 kg





TRANSOIL new gas compression station

Location: Silistea Braila, Romania

Client: I.R.I.G.C. Impex SRL Romania

Period: Apr. – Nov. 2020

Scope: Procurement, prefabrication, erection and PED certification of the new gas compression piping systems

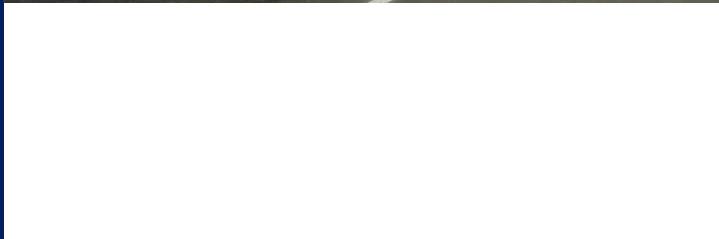


Project overhauling installations at Hydrogen plant 18500 Nm³h
Location: Preemraff Gothenborg, Sweden

Client: Hydrochem, Linde Engineering Division of North America
Period: Apr. 2018 – Feb.2019

Scope: Instrument installation, re-instate heat tracing and insulation, install Analyzer SSHC Cabinet at grade level and PSHC Sample Panel, Supply and install tubing connections , Install Instrument Junction Boxes, F&G monitoring system, instrumentation cables, run electrical cables (power , control), supply and install cable glands; rotating equipment junction; grounding, cable trays, testing. Mechanical, electrical, instrumentation & insulation works.





New Gas plant, Gassco Germany

Location: Emdem Germany

Client: Linde AG

Period: Oct. 2015 – Feb.2016

Scope: Mechanical repairs gas pipelines. Equipment erection



Hydrogen Plant Linde Petrobrazi

Location: OMV Petrom Ploiesti
Romania

Client: Hydrochem USA Linde Division

Period: 2013 - 2014

Scope: turnkey project- civil, piping,
electric&instrumentation works.



**Air separation unit Linde Galati GOX
60.000 Nmc/h**

Location: ArcelorMittal Galati, Romania

Client: Linde Gas Romania

Period: 2011 - 2012

Scope: civil detail design; piping and
equipment erection; pressure testing,
electric and instrumentation installation,
commissioning.

Power plant project

Power plant EDF 240MW Corsica France

Client: Bocard France

Period: 2012 – 2014

Scope: erection, alignment, commissioning (under MAN supervision) of 7 groups (diesel motors and electrical generators); erection of cooling towers and steel structures, pipe racks; execution and montage of 8 metal tanks for technological fluids; erection of 7 overhead cranes.





**Upgrading Turbogenerators
TG1 / TG2 – 7MW**

Location: ArcelorMittal
Galati , Romania

Period: Dec.2014 – Apr.2015

Scope of work: engineering,
piping, mechanics, electrical
and instrumentation,
commissioning.



Air separation unit Linde Galati GOX 60.000 Nmc/h

Location: ArcelorMittal Galati, Romania

Period: 2011 - 2012

Scope: civil detail design; piping and equipment erection; pressure testing, electric and instrumentation installation, commissioning.

General overhauling completion of 5 turbo compressors:

2 x K1700 - 100.000 Nmc/h (6stages),;1x VK100 Demag - 100.000

Nmc/h(4stages); 2 x VK85 Demag – 85.000 Nmc/h



Dynamic equipments

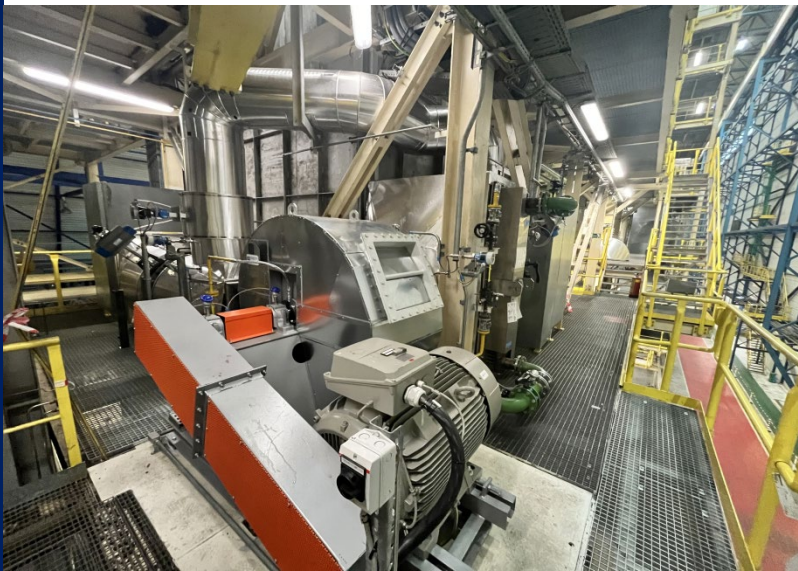
Hot Blast Stove revamping at Blast Furnace ArcelorMittal Atlantique Dunkerque France

Client: **Paul Wurth Deutschland GmbH**

Period: June 2019 – Nov.2022

Scope: Installing a new Hot Blast Stove No.34 including all necessary ducts and steel structures at Arcelor Mittal Atlantique. Criomec developed hand marked as-built documentation: workshop drawings, technological files, schedule, lifting plans, quality documents for mechanical erection, welding works, commissioning, risk analysis and safety documents. Installation works: steel structures & piping; valves, Blinds & dummies & shim plates; Gaskets & fasteners; Burner & exhaust ducts. Manufacturing & install & delivery: 25 to. steel structures dome platform, Blast furnace gas venting pipe. All supply components were painted & equipped with lifting lugs for transport & erection on final position.





Prefabrication of various steel structures and mechanical erection for galvanizing line

Location: **Tata Steel Netherlands**

Client: **Danieli Centro Combustion Spa**

Period: Feb. – Sept. 2022

Scope: Erection works for DL3 galvanizing line. Workshop engineering, prefabrication bolts, waste gas ducts, various furnace structures: beams, bracing, gratings, monorails, plates under jet coolers and heat exchanger (2floors), rapid cooler diffuser, tube treatment casing, combustion air piping.

Hot Blast stove 5.1 revamping at BF5

Client: **Liberty Galati Romania**

Period: Feb.2019 – Sept.2020

Scope: Hot blast stove revamping – steel shell manufacturing and erection, include: hot stove steel shell manufacturing, shell and checker support grid installation including compensator; platforms and additional metallic structures supported of the HS shell; HS valves installation; piping; instrumentation and sensors installation



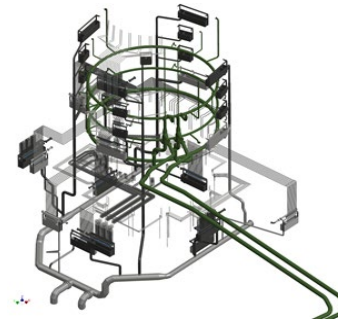
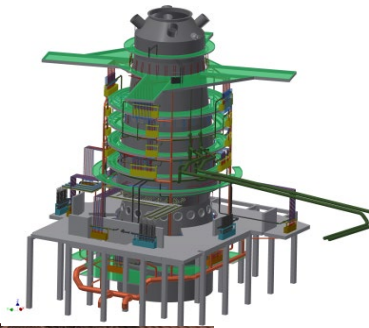


Project of emergency revamping BF no.2

Client: ArcelorMittal Gornicza Poland

Period: Mar.2017 - Aug.2018

Scope: Emergency repairs of BF no.2: salamander tapping; heart cleaning & repairs; staves replacement; shotcreting; dismantling and ramming carbon block's machine.



Revamping of BF ArcelorMittal Zenica, Bosnia&Hertegovina

Client: Danieli Corus BV The Netherlands

Period: July.2017 - July.2018

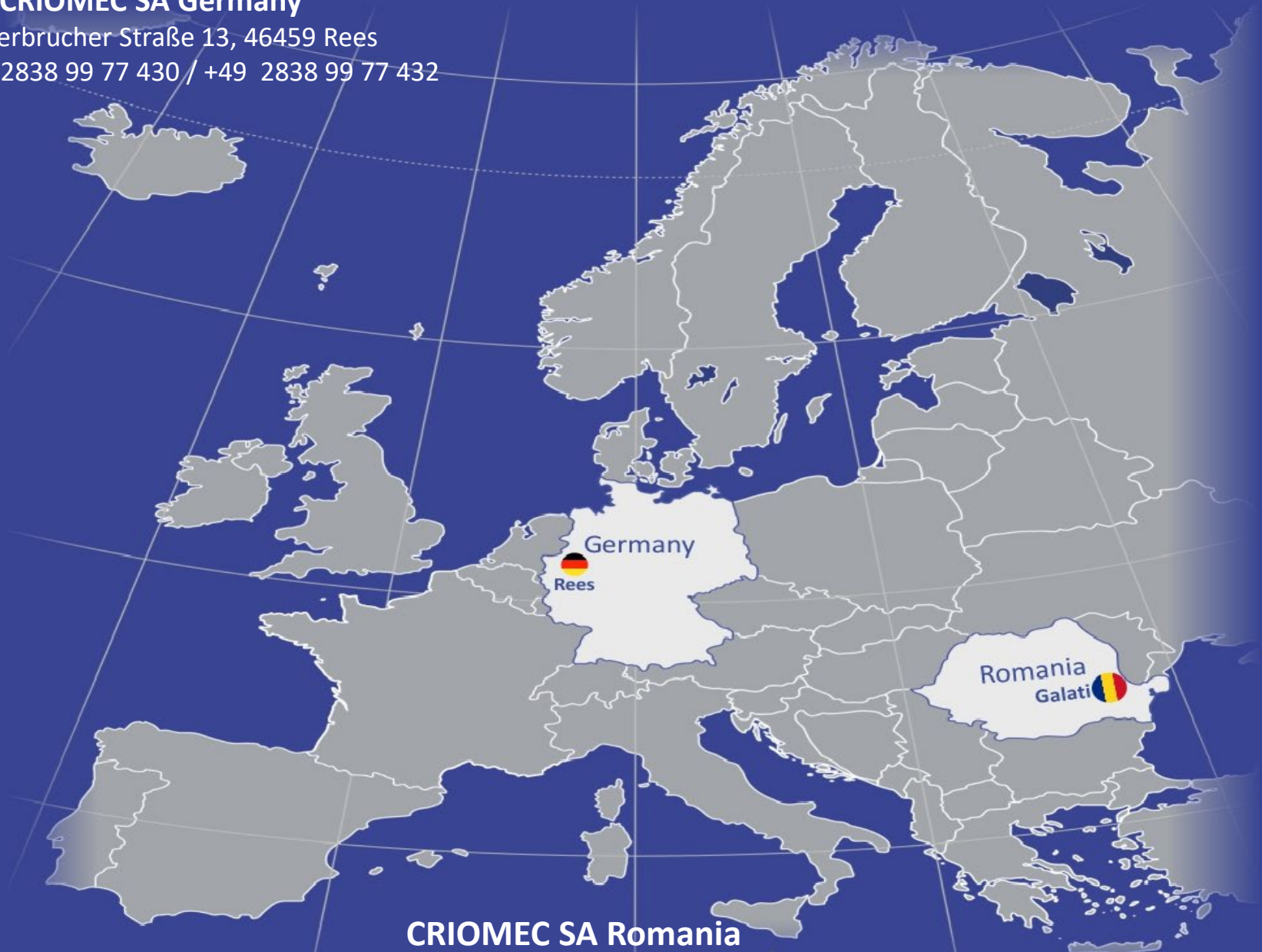
Scope: Engineering, Mechanical and piping works



CRIOMEC SA Germany

Wertherbrucher Straße 13, 46459 Rees

Phone: +49 2838 99 77 430 / +49 2838 99 77 432



Germany

Rees

Romania

Galati

CRIOMEC SA Romania

Headquarters -12 Calea Prutului street, 800219 Galati, Romania

Phone: +40.236.312437; Email: office@criomecsa.ro; website: www.criomecsa.ro